



Estudio radiográfico de los

Traumatismos Maxilo-faciales

Prof. Alejandro R. Padilla

Profesor en la cátedra de Radiología Oral y Maxilo-Facial
Facultad de Odontología
Universidad de Los Andes
Mérida-Venezuela

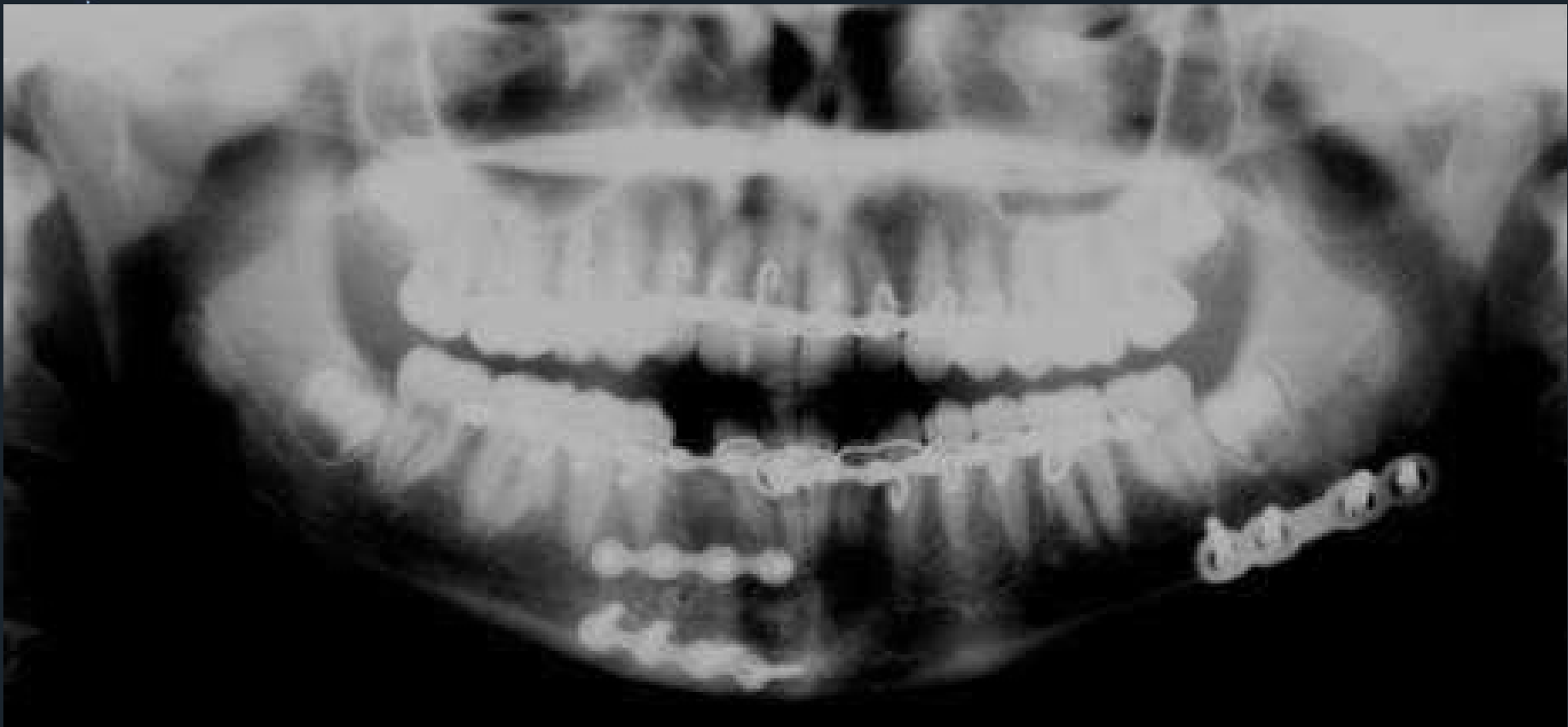
Dr. Axel Ruprecht

Profesor y Jefe Radiología Oral y Maxilofacial
Profesor de Anatomía y Biología Celular
Universidad de Iowa
USA



Traumatismo maxilo facial





Radiografías



Radiografías planas

Tomografías

Tomografías computarizadas

Radiografías



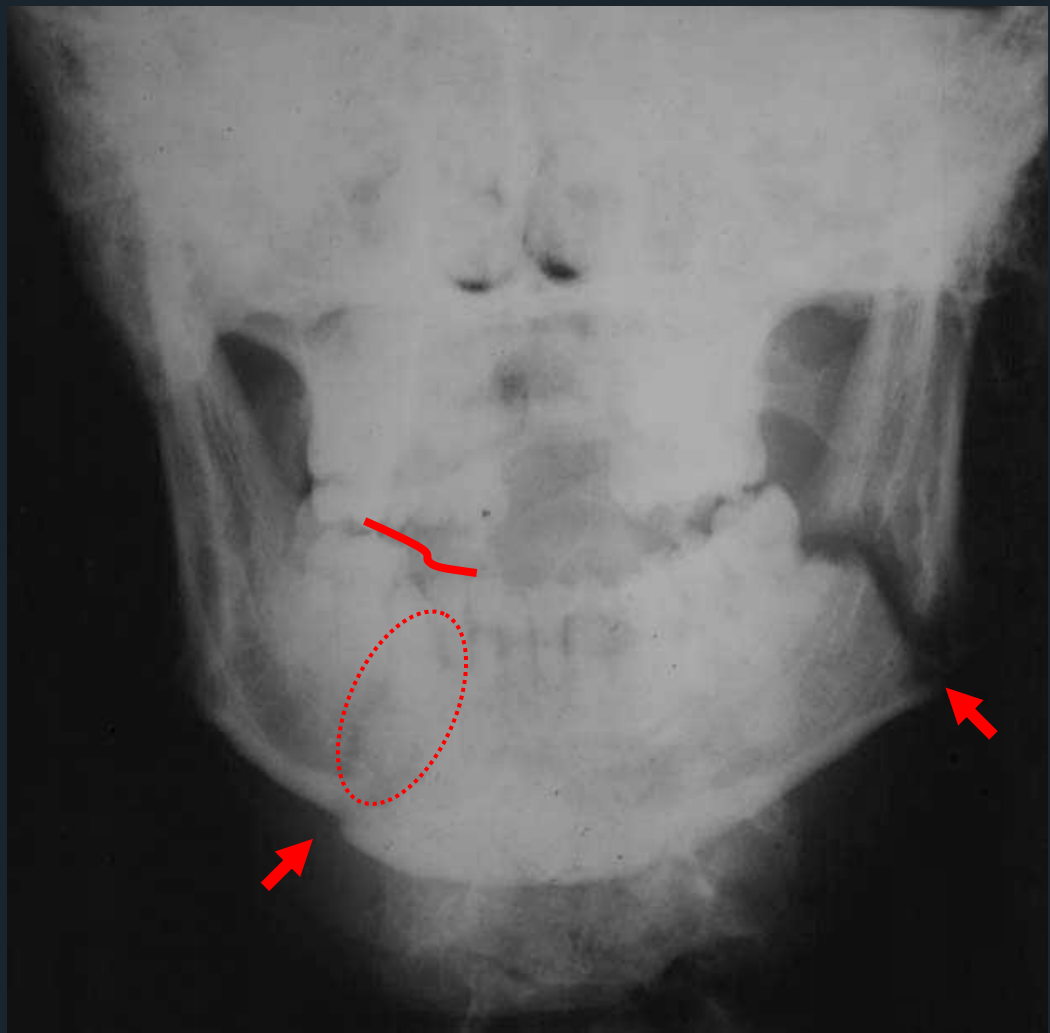
Discontinuidad

Dos líneas (plano de fractura)

Ensanchamiento del espacio periodontal

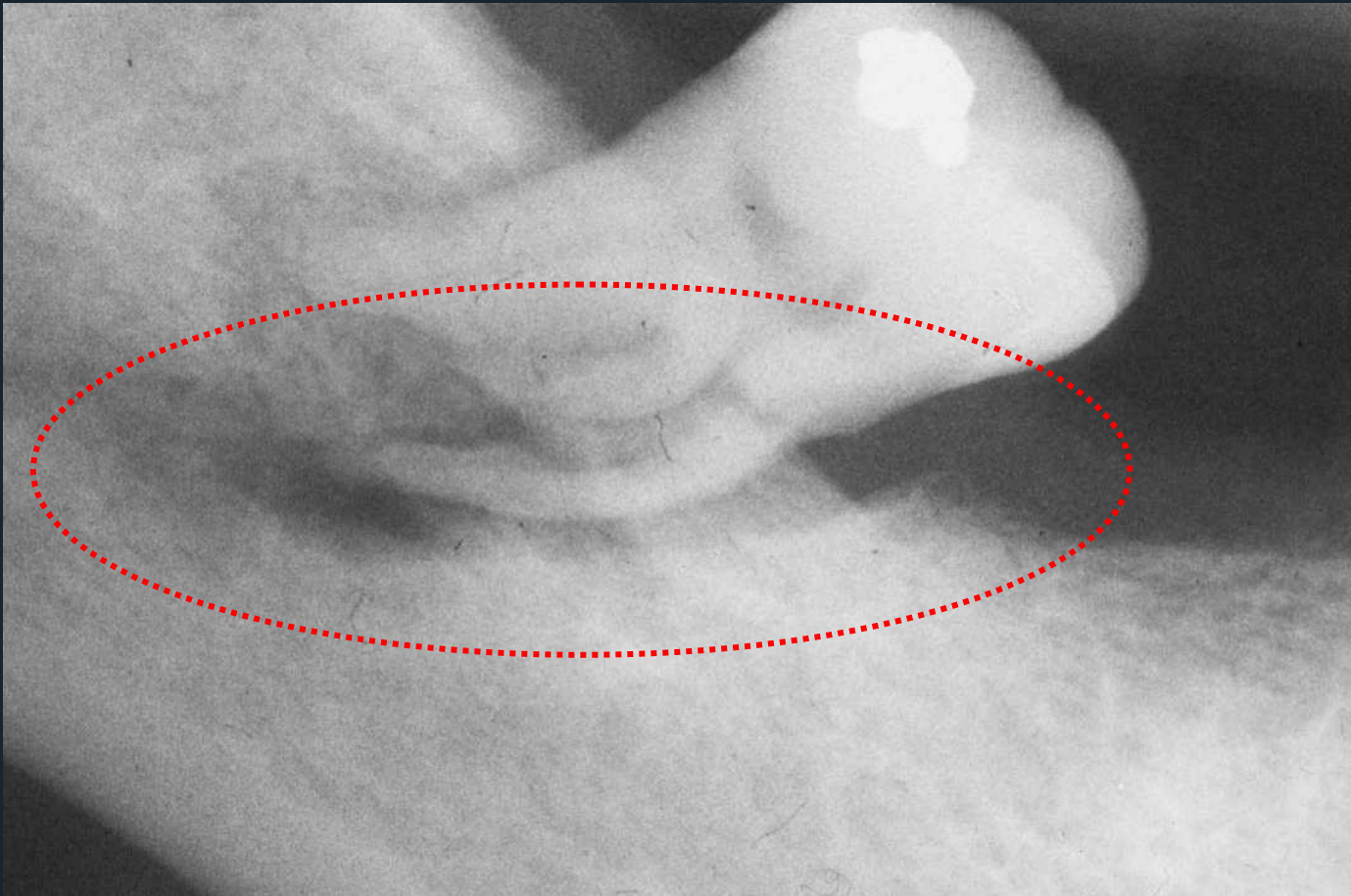
Incremento de la radiopacidad

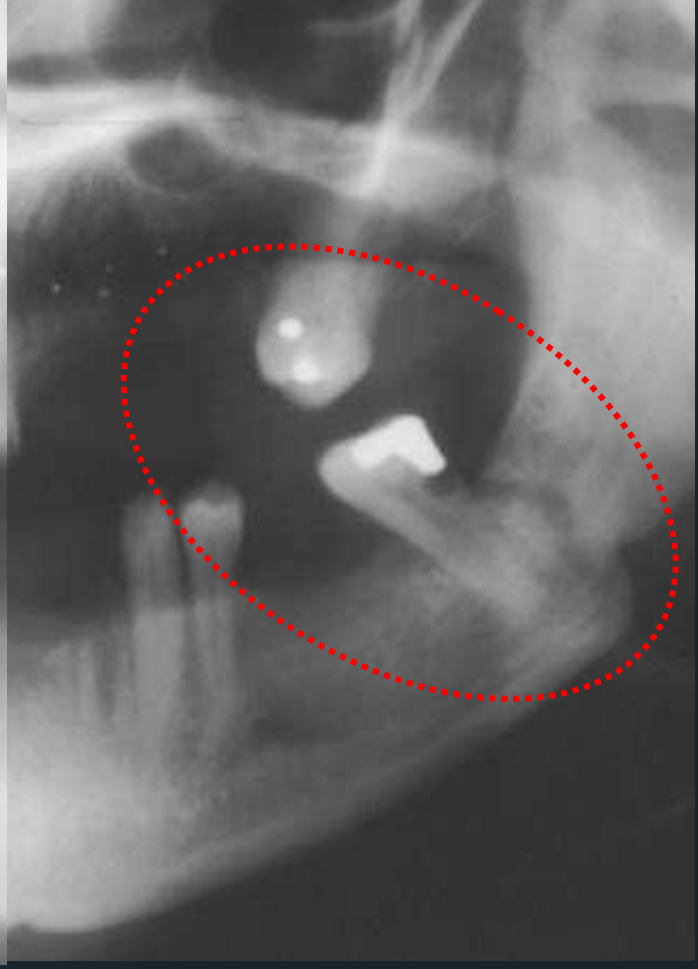
Disminución de la radiopacidad

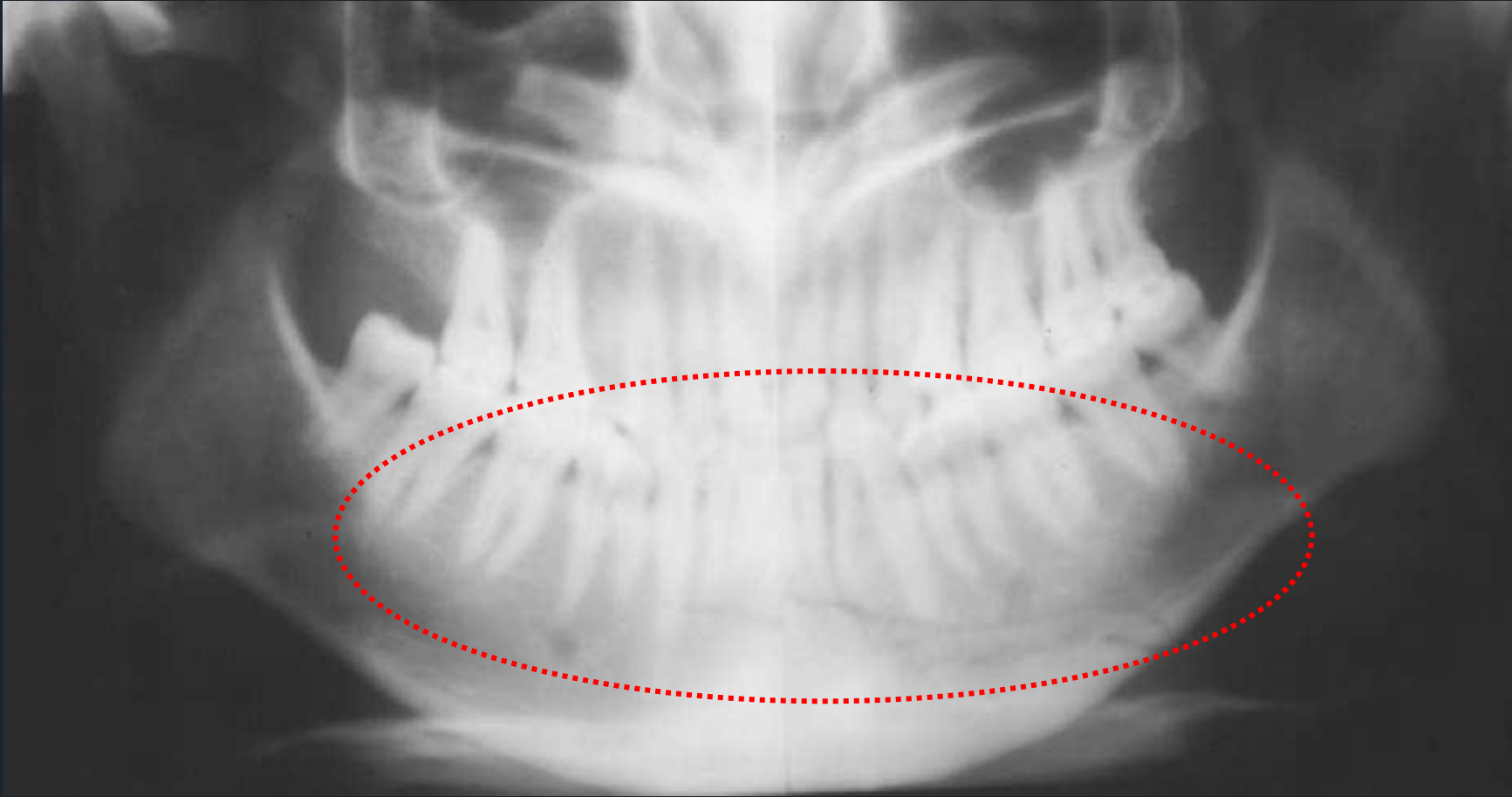


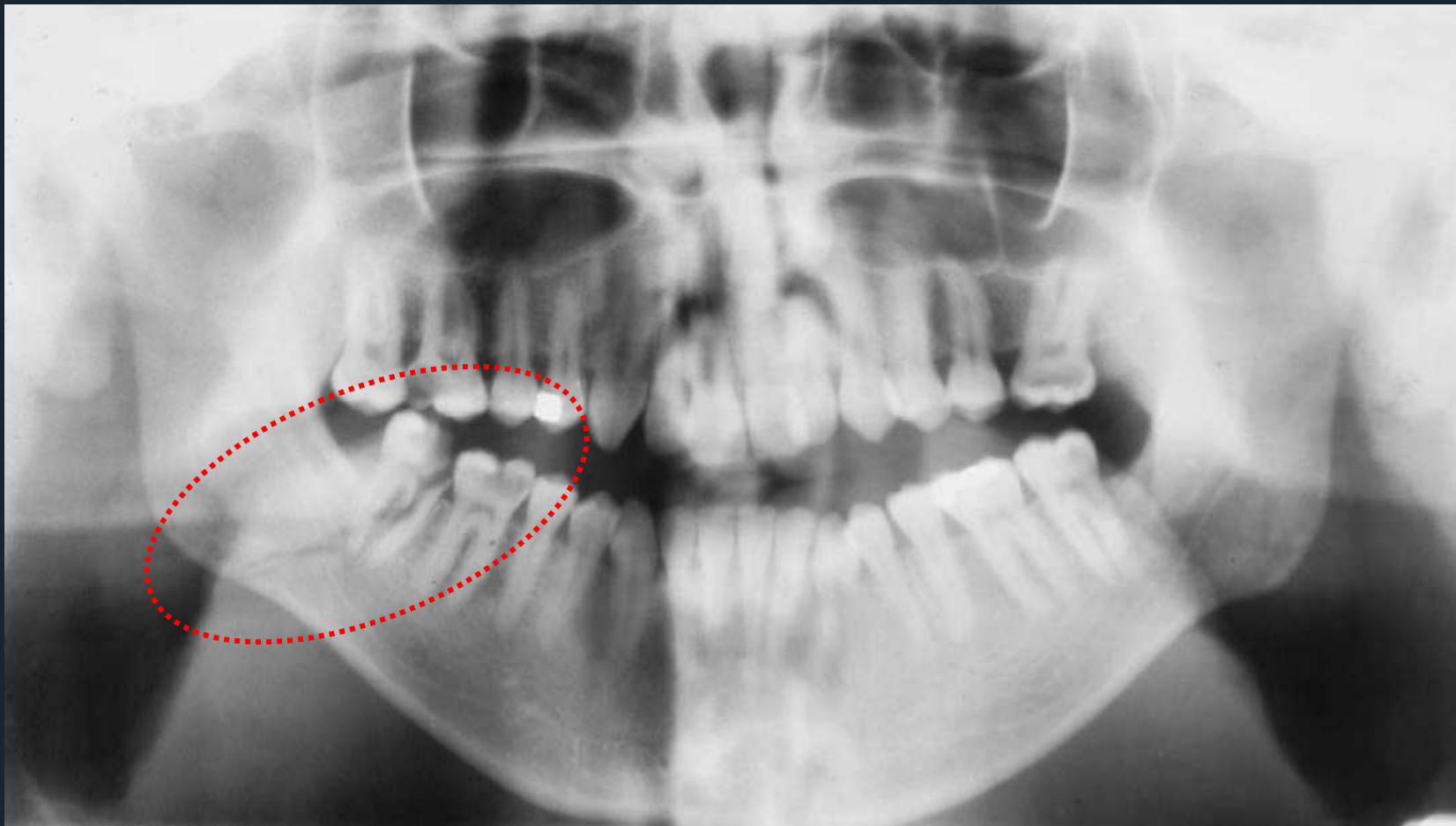


Traumatismo maxilo facial



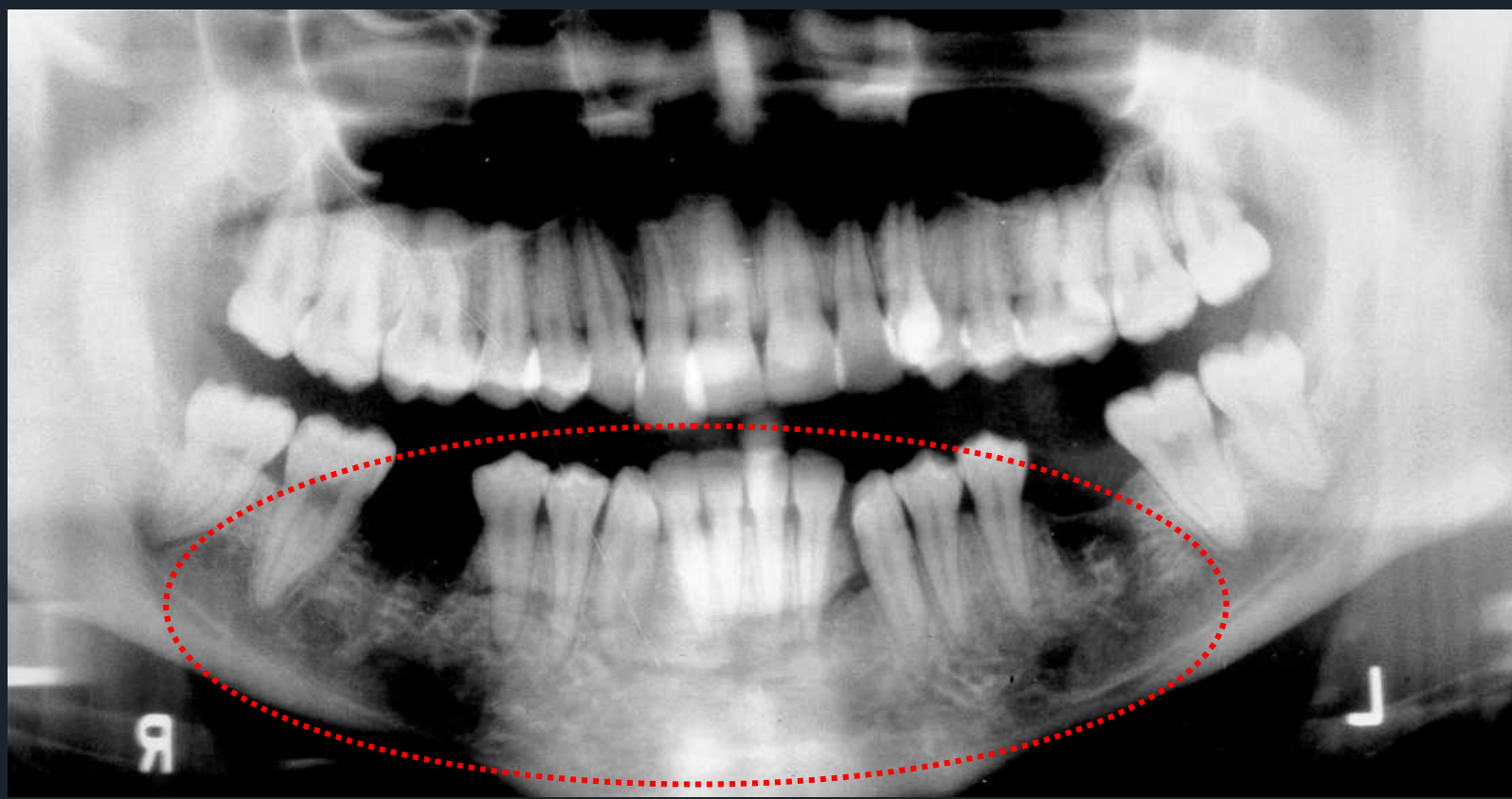


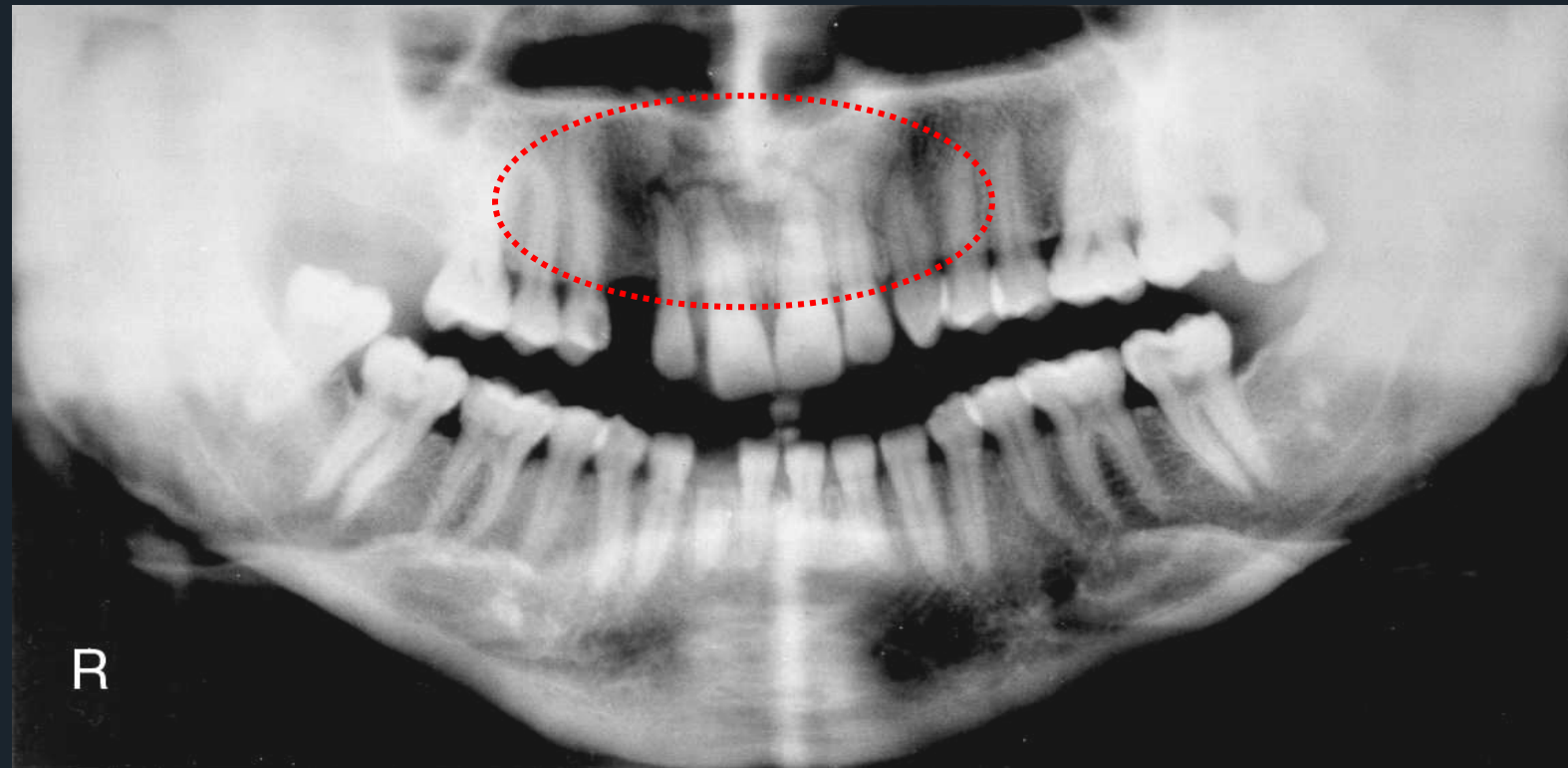




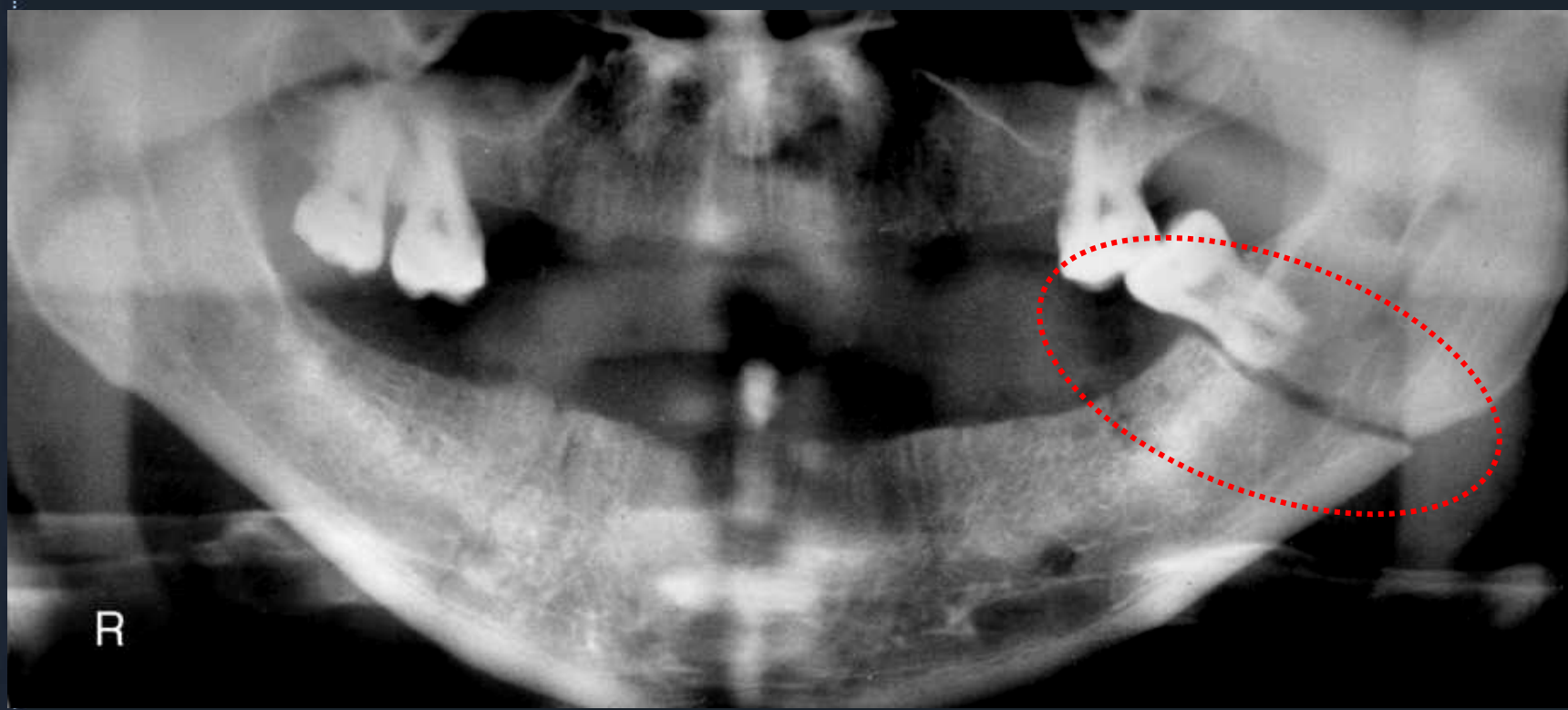


Traumatismo maxilo facial

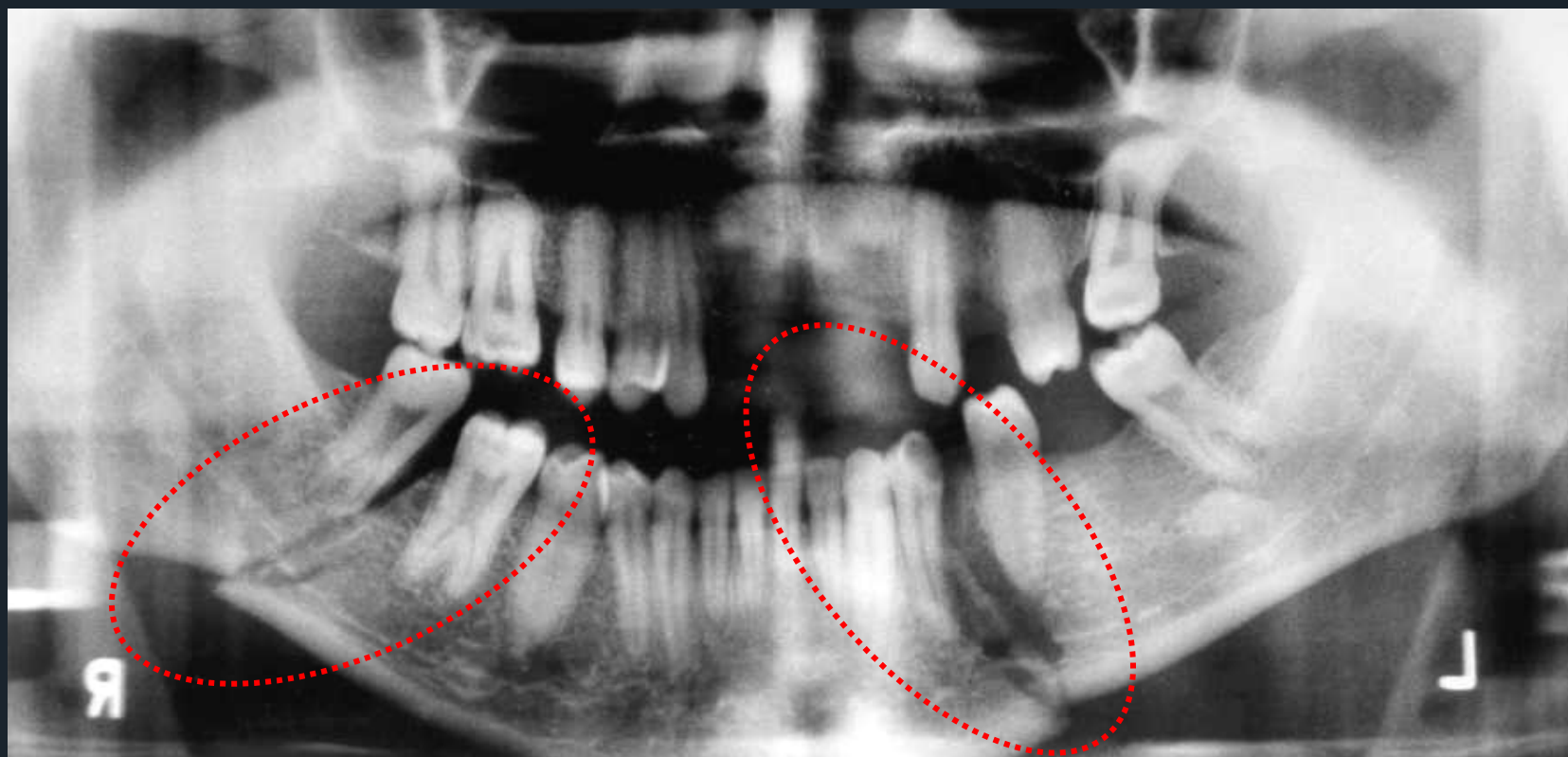


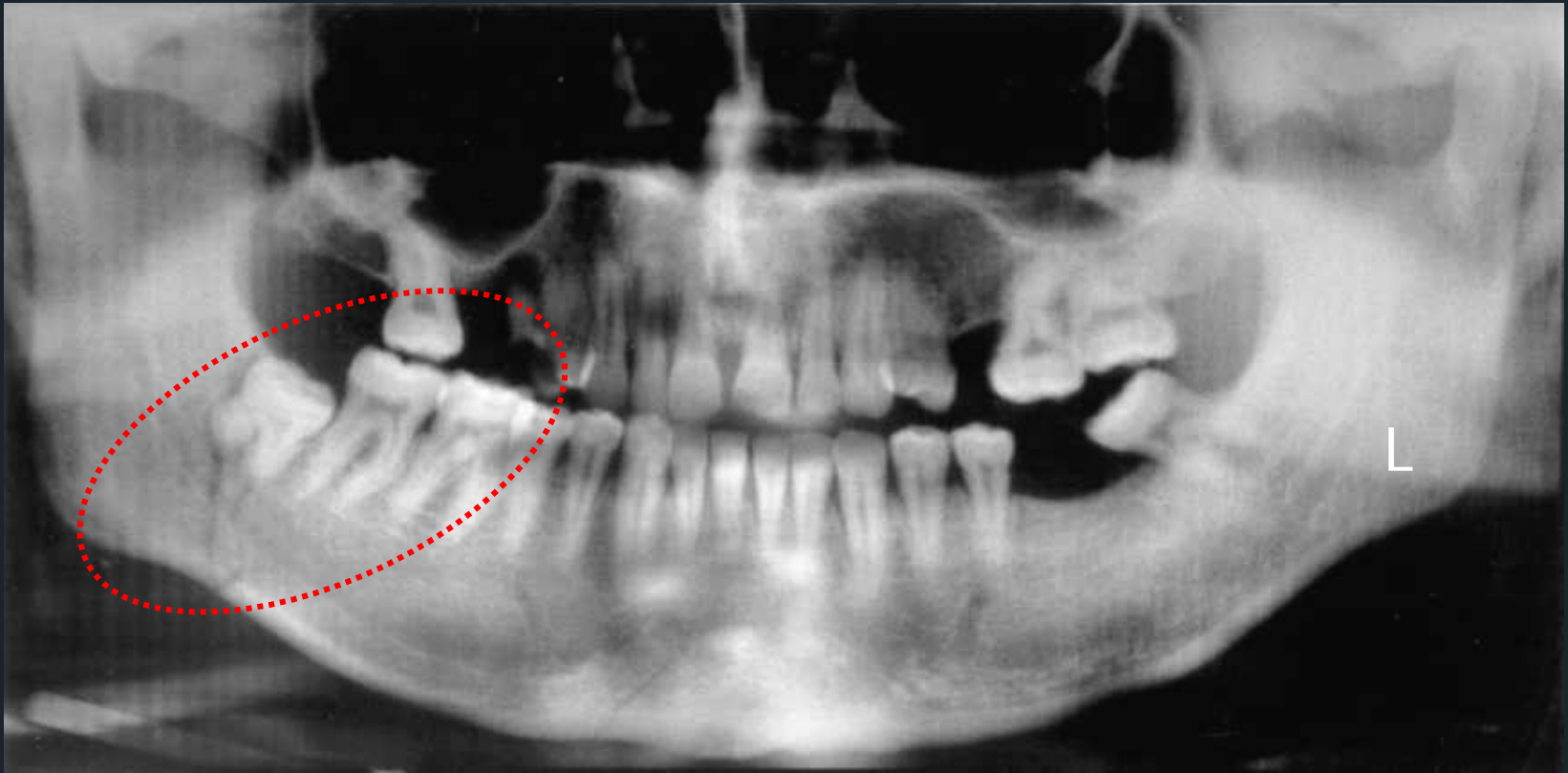






R

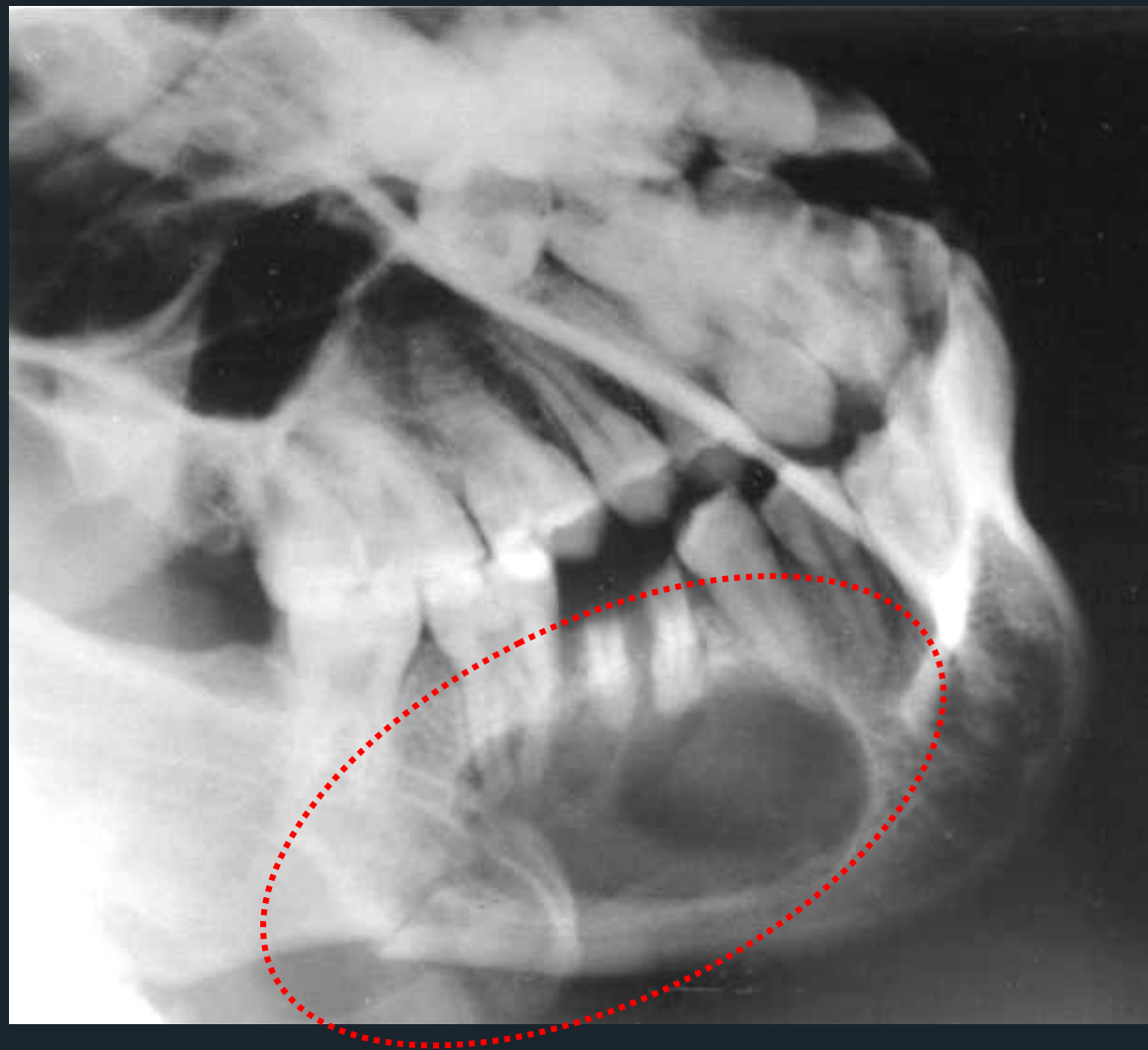








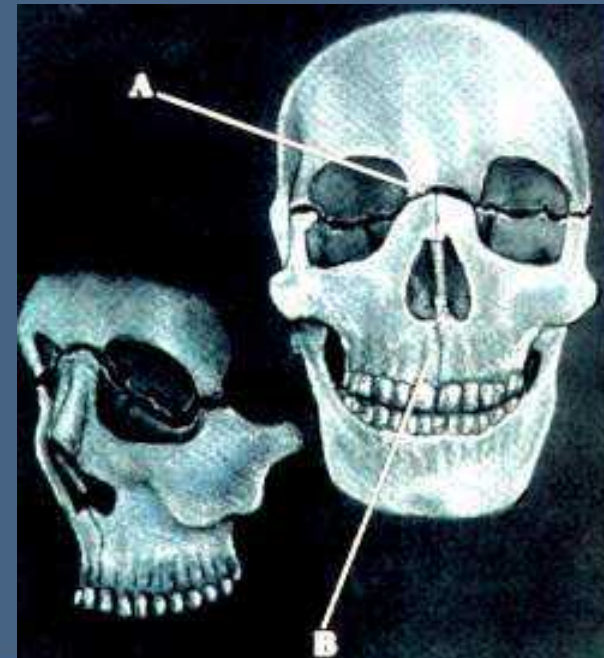
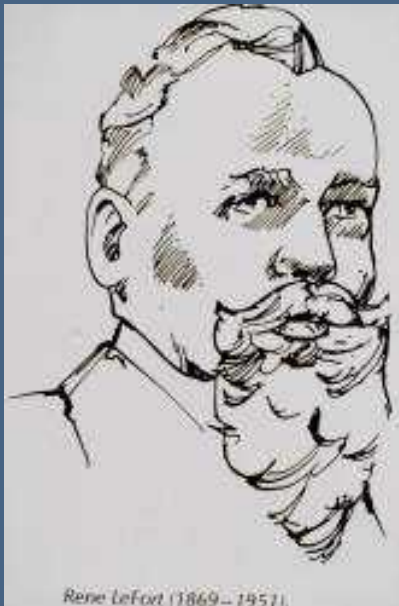
Traumatismo maxilo facial



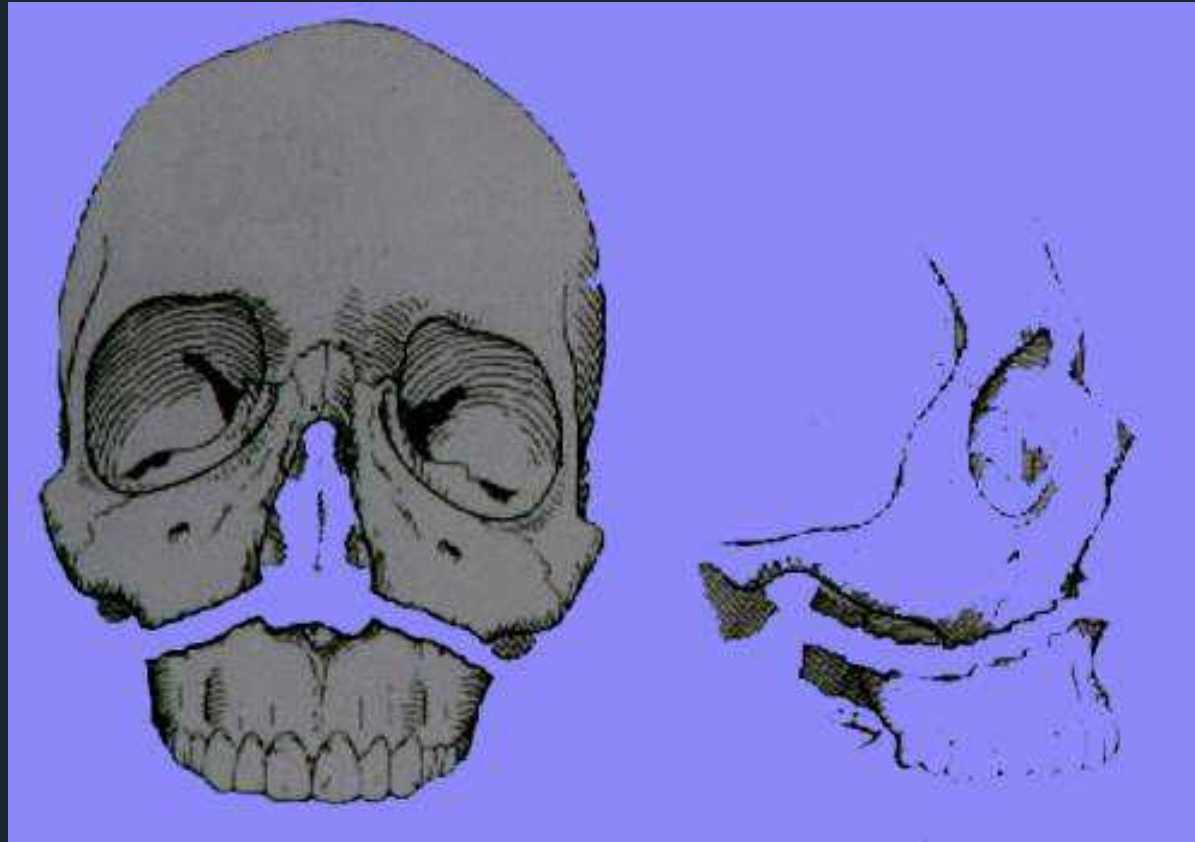
Fracturas media facial



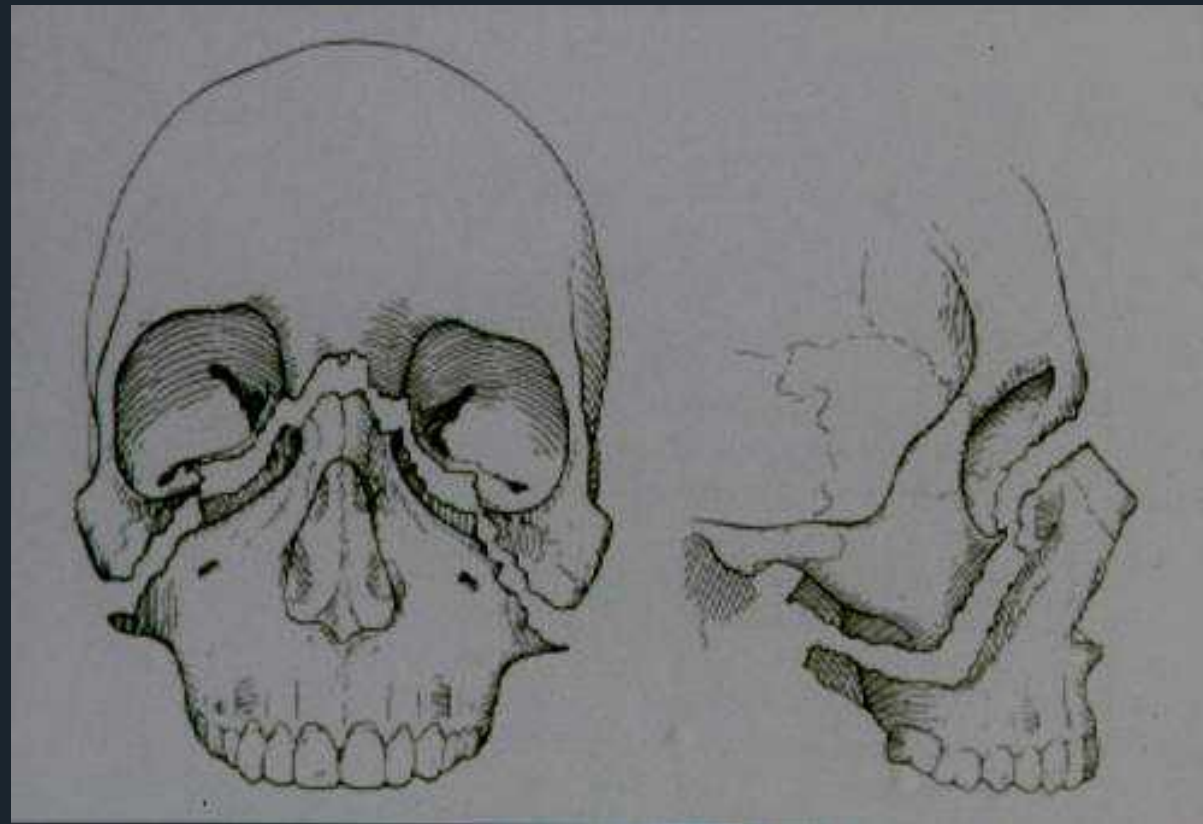
- ◆ LeFort I **transversal del maxilar (encima de los dientes)**
- ◆ Lefort II **Piramidal (a nivel del hueso nasal)**
- ◆ Lefort III **disyunción craneofacial (a nivel de la orbita)**



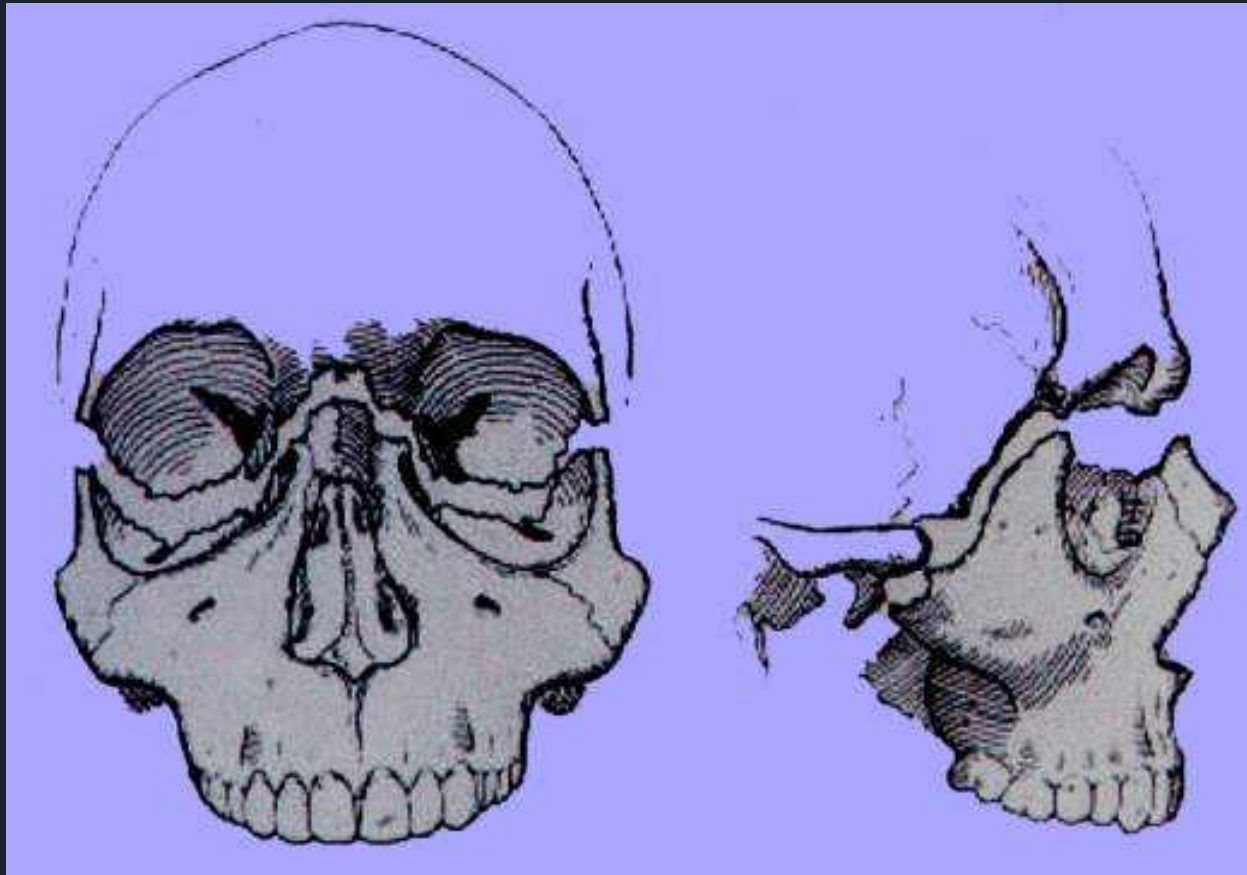
Lefort I



Lefort II



Lefort III





Estudio radiográfico de los
Traumatismos Maxilo-faciales



Gracias !